



Educating the whole child:

Academic Excellence

Character Development

Artistic Discovery

Athletic Achievement



CHRIST LUTHERAN SCHOOL

Established 1958

Our Philosophy

Pursuit of Academic Excellence

At CLS, inspired teachers and students are committed to a quality standard of learning and achievement in all aspects of school life. We place a strong emphasis on scholastic excellence in an atmosphere that encourages personal and social growth.

Tradition and Change

We embrace and value our school's history and heritage. We are committed to teaching and modeling Christian values in all subjects and activities within the school. And we recognize the importance of adaptation and innovation as a means of preparing our students for the future.

Integrity of Character

Within our community we strive to cultivate each student's sense of responsibility, compassion, honesty, and self-discipline. Our goal is to produce confident and ethical young people equipped for the challenges of life. We encourage children to develop a sense of self-worth as well as a sensitivity to the feelings and needs of others. Our children learn to recognize how their actions affect the nature and functioning of the school community and the larger community in which they live.

Rigor and Balance

Challenging expectations serve to bring out potential. Each student is encouraged to find the balance among academic, artistic, athletic and extra-curricular activities.

While at CLS we stress academic fundamentals, our students also receive outstanding instruction in computer skills and foreign language study, vocal and instrumental music, fine arts, performing arts, and physical education.

We value the development and appreciation of individual talents and achievement

rather than competition. Our athletic program offers students an opportunity to learn lessons in sportsmanship, teamwork, goal setting, competition, overcoming adversity, and winning and losing while maintaining behavior consistent with integrity of character.

Participation in a wide variety of student-selected activities is a vital part of a student's educational experience. In keeping with the school's commitment to educate the whole child, our programs in fine art, performing arts, and vocal and instrumental music enhance each child's ability to develop curiosity, express creativity, build character and appreciate the value of opportunity.



Our History

On September 5, 1958, Christ Lutheran Church realized a vision it had been nurturing—to open a Christian day school. Christ Lutheran School began holding classes with twenty-six students in grades 1–3. As the school

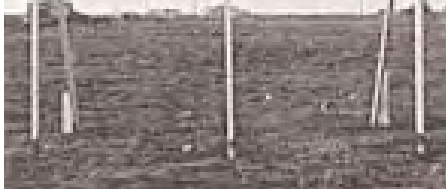
grew, so did our educational facilities.

The school currently has an enrollment of over 300 students in grades kindergarten through eight. The elementary

school is fully accredited by the Western Association of Schools and Colleges (WASC) and the National Lutheran Schools Accreditation (NLSA).

Our preschool, established in 1980, currently occupies three classrooms and nurtures over 80 students and their families. It is fully accredited by the Pacific Southwest District.

Our School Age Care facility currently has an enrollment of over 100 students. Care is available before and after school, along with time for study, art and science activities after school. An outstanding Summer Camp program is offered as well.



Basic Facts

History: Founded in 1958 as an educational arm of Christ Lutheran Church, which belongs to The Lutheran Church—Missouri Synod.

Enrollment: Open enrollment; church membership is not a requirement for school admittance. Tuition rates at CLS are offered at a discount to members of Christ Lutheran Church.

Grade Levels: Preschool through grade 8. Children must be two (2) years and nine months by September and potty-trained in order to enter preschool. Kindergarten students must be five (5) years old on or before December 1. A full-day kindergarten is offered. A departmentalized middle school format is offered for grades 6–8.

School Session Hours: Kindergarten, grades 1 and 2 are in session from 8:15AM to 2:50PM. Grades 3 through 8 are in session from 8:15AM to 3:00PM.

Accreditation: Fully accredited by the Western Association of Schools and Colleges (WASC) and the National Lutheran Schools Accreditation (NLSA) and Pacific Southwest District Accreditation of the Lutheran Church—Missouri Synod.

Curriculum: State approved textbooks are used for all subjects other than religion. Integrating the Faith, a curriculum guide for the Lutheran Church—Missouri Synod, is used at all levels. The curriculum is reviewed and updated on a regular basis. The school participates in the Lutheran Schools curriculum study, which follows the State of California Curriculum Framework.

Class Size: To ensure a quality program, normal class size is 26 students or less per class, K–8. A teacher assistant will be available at the discretion of the administration and Education Committee.

Computer and foreign language education: Computer education is part of the regular curriculum; a foreign language is offered at the middle school level.

Extra-curricular activities: After-school sports are offered to students grades 5–8. A wide variety of other curricular activities are offered including band, choir, concerts, drama, student government and a comprehensive scouting program.

Standardized Achievement Tests and Class Levels: Each year the Stanford Achievement Tests (SAT) are administered to students in grades 2–8. Classes consistently score above the national average. Graduates of Christ Lutheran School enter high school well-prepared to take grade level, accelerated or honors level classes.

Dress code: CLS permits a limited number of non-uniform days each year. Further information regarding uniform requirements as well as the non-uniform day dress code can be found in the parent handbook.

Extended Care: School Age Care is available from 6:30AM to 6:00PM. Supervision is available as designated for a fee. Further details regarding the program are available in the registration materials.

Hot Lunch Program: Hot lunches are available on a daily and optional basis.

Field Trips: Appropriate field trips are offered for all students at various grade levels. Outdoor education is offered in grades 5–8 with the eighth grade traveling to Washington, D.C.



Christ Lutheran School offers an honors level or above education in a co-ed day school. We have 300 students in grades kindergarten through eight as well as a preschool, and before- and after-school care.

Please call us at (949) 548-6866 to arrange a tour and receive an application for admission packet.



CHRIST LUTHERAN SCHOOL

760 Victoria Street

Costa Mesa, CA 92627

(949) 548-6866